

LAKELAND AUDUBON SOCIETY



The Chat



April 2025

CHAPTER MEETING

Tuesday, April 22

7:00 PM

Lions Field House - 270 Elkhorn Road (Hwy 67), Williams Bay, WI

Free and open to the public!

Featuring the following presentation:

"Memories Galore of Birding Surprises: Recalling Nearly 60 Years Worth of Unanticipated Avian Adventures"

By Wayne Rohde

This talk will include photos of birds, along with numerous recollections of 'all things birds' – some meaningful, some transforming, some frightening, some humorous ... and all (at least in hindsight) delightful.

About the Speaker

Wayne has been an avid birder for over 55 years, and an avid bird photographer for the past 15 years – during which he has captured images of over 270 species of Wisconsin birds.

He has also served as newsletter editor for Lakeland Audubon's "The Chat" and Beloit's Ned Hollister Bird Club's "The Flyer," as well as Bird Reports Coordinator for the Wisconsin Society for Ornithology.



Above: Canada Jay, also known as "Whiskey Jack".

Below: American Tree Sparrow, Snowy Owl, Bald Eagle. Photos by Wayne Rohde



Upcoming Events

Multiple nature themed activities are on tap this spring.

World Migratory Bird Day 2025

Sunday, April 27

12:00 PM (Noon) to 4:00 PM

[Volo Bog State Natural Area](#) - 28478 W Brandenburg Road, Ingleside, IL

Saturday, May 17

10:00 AM to 2:00 PM

[Glacial Park](#) - Lost Valley Visitor Center: Route 31 & Harts Road, Ringwood, IL

Saturday, May 17

9:00 AM to 11:00 AM

[Turner Tract](#) - Hackmatack National Wildlife Refuge: N541 County Highway H, Genoa City, WI

This World Migratory Bird Day celebration is brought to you by the Friends of Hackmatack National Wildlife Refuge, Friends of Volo Bog, Illinois Department of Natural Resources, McHenry County Audubon, McHenry County Conservation District and the U.S. Fish and Wildlife Service. [Learn More!](#)

World Migratory Bird Day Hike

Saturday, May 10

7:00 AM to 9:00 AM

[Kishwaukee Nature Conservancy](#) - 251 Elkhorn Road (Highway 67), Williams Bay, WI

Go out on a bird hike this spring and celebrate World Migratory Bird Day at Kishwaukee Nature Conservancy. This hike will be led by KNC board member Jim Killian and Lakeland Audubon's Lisa Granbur and Janice Bain. Meet at the pavilion near the west entrance. Parking is available at the Lions Field House.

Annual Mother's Day Weekend Bird Walk

Saturday, May 10

8:00 AM to 10:00 AM

[Petersen Island Woods Preserve](#) - Oak Park Road, Elkhorn, WI

Take part in an annual tradition this spring with the Kettle Moraine Land Trust at one of their beautiful nature preserves. This walk will be led by long time birder and Lakeland Audubon President, Kevin Dickey. Coffee and muffins 8 - 8:30, followed by the walk.

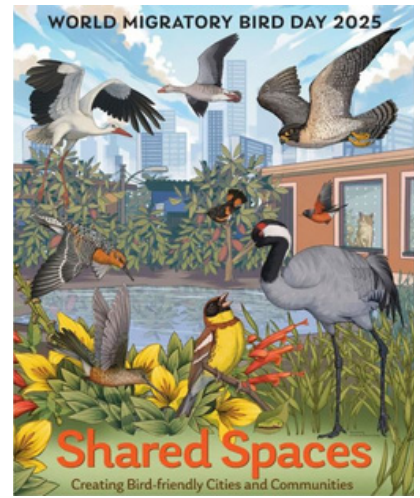
Kettle Moraine Bird Festival

Saturday, May 17

8:00 AM to 12:00 PM (Noon)

[Bromley Woods](#) - W5798 Greening Road, Whitewater, WI

The Geneva Lake Conservancy's Biennial Kettle Moraine Bird Festival highlights native birds in Bromley Woods. Enjoy a short hike led by Lakeland Audubon Society and bask in the sights and sounds of native birds in spring. Tickets are required (available through the GLC website). [Learn More!](#)





World Migratory Bird Day Program

Saturday, May 17, 2025

City of Lake Geneva Public Library

10:30 am to 12:30 pm

In the Smith Room (recommended for ages 14 and up)

10:30 AM Shorts:

- Welcome & update on the Purple Martin Colony by Sarah McConnell, Avian Committee Chair
- Making your yard a stop on the migratory map: the tale of one yard transformed from boring to inviting by Betty Volquardsen, Friends of Hillmoor

11:00 AM Main Speaker:

- "Canaries in the Coal Mine: Birds and Climate Change" by Dr. Benjamin Zuckerberg, Ph.D., Department of Forest and Wildlife Ecology at the University of Wisconsin-Madison

On the Library Patio (recommended for ages 5 to 13)

10:30 AM Children's Activities

- Reading of the book "The Purple Martin Palace"
- Decorate a bird feeder or bird house, play with bird puppets and other activities

12:00 PM – Refreshments and Tours of the Purple Martin Houses



2025 | Lakeland Audubon Native Plant Sale |



*"In the past, we have asked one thing of our gardens: that they be pretty.
Now they have to support life, sequester carbon, feed pollinators and manage water."*

Doug Tallamy

It's spring and the gardening bug may be nipping at your senses. We have assembled 12 native plants that will enhance your landscape with not only color, but function.

Six basic reasons to restore your property using native plants according to the grassroots call-to-action movement, the Homegrown National Park is striving to regenerate biodiversity and ecosystem function. The Homegrown National Park is co-founded by Doug Tallamy and Michelle Alfandari.

Self-sustaining

When you plant natives matching the soil and sun conditions of your property and the sun and soil needs of the native plants, you will find many perks.

- ! The plants will self-seed
- ! The plants will grow deep roots
- ! The plants will require little to no maintenance

Creates an active food chain

- ! Plants support pollinators
- ! Pollinators feed the birds
- ! Birds eat and disperse the seeds.

Our pollinators and insects did not evolve with plants that are non-native to a specific area. As a result, they usually don't meet the requirements of our pollinators and insects. For example, during migration, our birds need to store energy. They might choose berries from a buckthorn with a high sugar content but a low fat content, insufficient nutrients for a migrating bird. Think low quality white bread vs high quality whole grain bread - both are edible, but one provides greater nutrition. Berries of native plants that ripen in the fall, contain the right balance of sugar/fat essential to provide long-lasting energy. This symbiosis happens because the birds and the native plants evolved together, they meet each other's needs in the right time frame.

Carbon Sequestration Giant

Native plants trap and sequester carbon back into the soil. The deep extensive roots complete this sequestration infinitely better than lawn grass and ornamentals.

Better symbiosis

The healthy extensive root structures from native plants are heavily relied on by microorganisms. In return, the microbes produce and deliver nutrients to the plant. The end result of this symbiotic relationship is better soil for other native plants and certainly your vegetable garden.

Healthy pollinators

Bees will travel up to 2 miles for nectar, bats even farther. By attracting insects and animals to your yard, not only will they pollinate your plants, they will also pollinate your neighbor's plants. Pollinators prey on pests. Say goodbye to those pesky mosquitoes and aphids.

Improved habitat

Making natural habitats can feel like a struggle, but keep in mind the benefits can be immediate. In one season, you will notice new pollinators and active wildlife. In that same season, your native plants will provide more ecological benefits than turf grass could in its lifetime.

Thanks for supporting Lakeland Audubon and planting natives - a smart first step in restoring biodiversity.

"How well a landscape accomplishes these goals depends on how well we, as landscape managers, choose and deploy the plants on our landscapes."

Doug Tallamy

2025 | Lakeland Audubon Native Plant Sale | Information Sheet

Whorled Milkweed (*Asclepias verticillata*)

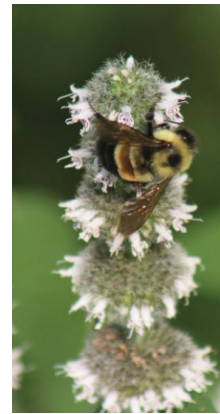
- Full/Part sun, med to dry soil, max height 2 feet, white flower
- Blooms later than most milkweeds, anytime between July and September
- Deer/rabbit resistant
- Rhizomatous, will spread
- Attractive to many insects: long and short - tongued bees, wasps, flies, butterflies etc
- Host plant to the monarch butterfly

New England Aster

- Full sun, wet to med-dry soil, height 5 ft, purple (variable) flowers, blooms Aug to Oct
- Popular with pollinators
- Drought tolerant
- Prune this plant back early in the season to encourage bushy, rather than tall, growth.

Hairy Wood Mint (*Blephilia Hirsuta*)

- Part sun to shade, medium-wet to med soil, height 3 feet, white flower, blooms June - Sept
- Loved by pollinators
- Mint-scented leaves
- Deer repellant
- Great choice for shady woodlands or woodland edges. It likes partly shaded areas.
- Rhizomatous, will form dense colonies



Sneezeweed (*Helenium Autumnale*)

- Full to part sun, wet to med-wet soil, height 4ft, yellow flower, blooms Aug - Oct
- Playful daisy-like flowers with a large ball center
- Host plant to the Dainty Sulphur
- Does NOT contribute to allergies

Showy Goldenrod (*Solidago speciosa*)

- Full to part sun, med to dry soil, height 3-5 ft, spread 2-3 ft, yellow flowers, blooms Sept to Nov
- It is one of the most beautiful goldenrods with feathery plumes of yellow flowers atop an attractive red stem. Is an excellent choice for perennial borders.
- Fibrous root system, NOT rhizomatous, so it will spread slowly to form clumps but will not overwhelm small areas like Stiff Goldenrod can.
- Divide clumps every third year to promote vigorous growth and better flowering.

Prairie Alumroot (*Huechera richardsonii*)

- Full to part sun, med-wet to dry soil, height 2 ft, tiny pale-green/cream colored bell-shaped flowers, blooms May-June
- It likes well drained soil
- Hummingbirds and butterflies love the tubular flowers. *Colletes aestivalis* is a bee species that specializes in pollinating Alumroot plants

Cardinal flower (*Lobelia cardinalis*)

- Full to part sun, Wet to med-wet soil, height 4 ft, cardinal red flowers, blooms July - Sept
- Loved by hummingbirds and swallowtail butterflies
- Deters herbivores with the secondary compound, "lobeline", that it produces
- Is a very showy plant and makes excellent cut flowers

Foxglove beardtongue (*Penstemon digitalis*)

- Full to part sun, med to med-dry soil, height 4 ft, white to pink tubular flowers, blooms June, July
- Hummingbirds and many species of bees are attracted to the tubular flowers
- It gets its name because the sterile stem has a tuft of small hairs and looks like a hairy tongue

Jacob's ladder (*Polemonium reptans*)

- Full sun to shade, med soil, height 12 in, sky-blue flowers, blooms April to June
- A spring blooming native that works well in shade gardens and under shrubs or flowering trees.
- Beneficial to pollinators in the early spring when food sources are scarce

Black-eyed susan (*Rudbeckia hirta*)

- Full to part sun, med-wet to med-dry soil, height 2 ft, yellow flowers, blooms June to Oct
- It is biennial so it will bloom every other year.
- Drought tolerant
- Cheery flowers that are sure to please

Old field goldenrod (*Solidago nemoralis*)

- Full to part sun, med-dry to dry soil, height 2 feet, yellow flowers, blooms Aug to Sept
- Great plant for trouble spots. It can handle the worst of soils.
- Birds and pollinators benefit from goldenrods
- Deer resistant

Bebb's oval sedge (*Carex bebbii*)

- Full sun, med-wet to med soil, height 3 ft, bloom time June to July
- Is clump forming with a cascading appearance so it adds variety and interest
- Great companion plant to cardinal flower, obedient plant, Iris and prairie blazing star

2025 | Lakeland Audubon Native Plant Sale | ORDER FORM

Customer Name	Phone #	Email

Lakeland Audubon thanks you for your support.

Native Plant	Quantity	Cost per	Your Cost	Directions
Whorled Milkweed		\$5.00		Minimum order: 4 plants (\$5 each) Special: If you order 8 or more plants, you earn 2 free plants!
Hairy Wood Mint		\$5.00		
Sneezeweed		\$5.00		
Prairie Alumroot		\$5.00		
Cardinal Flower		\$5.00		Make checks payable to: Lakeland Audubon Society Mail your order (Along with payment) to: Lakeland Audubon Society P.O. Box 473 Elkhorn, WI 53121
Foxglove Beardtongue		\$5.00		
Jacob's Ladder		\$5.00		
Black-eyed susan		\$5.00		Questions ? Call: (262) 729-9702 Email: lakelandaudubon.com DEADLINE <u>Orders & checks must be received by:</u> Wednesday, May 28, 2025 Pick-up: Tuesday, June 3, 2025 4:00 PM - 7:00 PM Lions Field House - 270 Elkhorn Road, Williams Bay, WI
Old Field Goldenrod		\$5.00		
Showy Goldenrod		\$5.00		
New England Aster		\$5.00		
Bebb's Oval Sedge		\$5.00		
Totals		Tot Cost		

Field Trip

Tuesday, May 20, 2025

9:00 AM – 12:00 PM (Noon)

Seno Woodland Center – 3606 Dyer Lake Road, Burlington, WI

Free and open to the public!

Join us as we visit Seno Woodland Center. This property is one of the Kenosha/Racine Land Trust Conservancy's preserves and is located south of Burlington in western Kenosha County. We will walk the trails that lead through the preserve and watch for birds and other wildlife. Meet in the parking lot prior to 9:00 AM.

Learn more: <https://www.senokrlt.org/visit-seno-woodland-center.html>

Locate this property by clicking/taping the following link. [Seno Woodland Center](#)

Please contact us and let us know if you are interested in attending this field trip.

<https://lakelandaudubon.com/contact> Call or Text: +1 (262) 729-9702

LAKELAND AUDUBON Board of Directors

President

Kevin Dickey 262-889-4262

Vice-President

Lisa Granbur 262-354-0199

Treasurer

(Volunteer Needed)

Secretary

Dale Jefchak 262-723-3025

Citizen Science

Kyle Cudworth 262-245-6860

Newsletter

(Volunteer Needed)

Education

Janice Bain 262-215-1407

Bird Seed Sale

(Volunteer Needed)

Conservation

(Volunteer Needed)

Hospitality

Kathy Wisniewski 262-949-4174

Field Trips

(Volunteer Needed)

Publicity

(Volunteer Needed)

Bird Walks

Saturdays

11:00 AM - 1:00 PM

Big Foot Beach State Park

N1550 S Lakeshore Drive, Lake Geneva, WI

Meet in the main parking area to the right of the entrance station a little before 11:00 AM. A state park sticker (\$28, \$13 if age 65 or older) or daily pass (\$8, \$3 if age 65 or older) is required to enter Big Foot Beach State Park.

Sundays

11:00 AM – 1:00 PM

White River County Park

6503 Sheridan Springs Road, Lyons, WI

Get out and enjoy one of the best parks Walworth County has to offer. We'll walk the trails and be on the lookout for birds and other critters. We'll also watch for plant blooms and other interesting elements of nature. Meet at the kiosk by the parking lot a little before 11:00 AM.

Please contact us and let us know that you are interested in attending a walk.

<https://lakelandaudubon.com/contact>

Call or Text: +1 (262) 729-9702

The Chat is the newsletter of the Lakeland Audubon Chapter of the National Audubon Society, P.O. Box 473, Elkhorn, WI 53121. Subscription is \$15 per year for printed copies sent by US mail.